

Esme Timbery Creative Practice Lab

Io Myers Studio

Technical Specifications

As of 2025

Please Note: These Technical Specifications subject to change.
Please confirm all details with the Creative Practice Lab

General

Io Myers is managed by the Creative Practice Lab, part of the School of Arts and Media at the University of New South Wales. It is a purpose-built performance space opened in 2019. There are two performance spaces in the Esme Timbery Creative Practice Lab, the larger Io Myers Studio and Studio One, an intimate Black Box Space.

Io Myers is a flexible studio space. It has a balcony level (where the control position is usually located) and a catwalk grid for lighting.

Contacts

School email (general)		sam@unsw.edu.au
Mark Mitchell	Production Manager	m.mitchell@unsw.edu.au
Troy Reid	Production Assistant	troy.reid@unsw.edu.au

Access

Loading Access to Io Myers is limited. The loading dock, on Union Road is shared with Studio One and other university facilities. Access from the loading dock is through corridors and a goods lift, involving several tight 90-degree corners and involving going through student common areas.

The goods lift door is 1600(w) x 2400(h). The lift is 1800(w) x 2250(d). The smallest door between the dock and theatre is 1500(w) x 2100(h).

Access to the Loading Dock needs to be arranged in advance with the Production Manager.

General Access is through the main entry on First Ave East, and down the stairs to your left or the lift. There is no stage door. There is a no stopping zone outside this entry.

Parking is limited at the University, there are no dedicated parking spots and it is not possible to leave vehicles in the loading dock.

Vehicle access to the loading dock is From Gate 2 on High Street.

Dressing Rooms

Io Myers has one dedicated dressing room, suitable for up to 25 people. There are also showers and toilets, including accessible ones, available. Toilets and showers are shared with Studio One.

A second dressing room is dedicated to Studio One, but it may be available to you if required. Please send an email to Venue Management at cpl@unsw.edu.au if required.

Wi-Fi and Mobile

Currently, there is limited to no mobile reception in any of Io Myers.

Wi-Fi is available to UNSW students and staff on the 'Uniwide' network.

Guest Wi-Fi is available on the 'UNSW Guest' network once you're on campus, this requires a simple registration process with an email address.

Technical

Lighting

Io Myers has a catwalk grid which most lights can be rigged from. In addition, there is a lighting bar above the balcony that can be reached by platform ladder.

Control

ETC Element 2

5 x LSC Redback Dimmer Racks (Total 60 x 1.2KW channels)

Fixtures

4 x CCT Mini fresnels (with barn doors)

12 x Coemar 650W Fresnels (3 barndoors)

4 x Patt 743 1KW Fresnels (with barndoors)

8 x Selecon 1KW Fresnels (with barndoors)

12 x Strand Prelude 650W PC

6 x Selecon 1KW PC (with barndoors)

22x CCT 650W profile zoom spots

3 x Strand SL 15/32 profiles

5 x Strand SL 23/50 profiles

6 x Seledor Desire D40 Vivid LED (45° round lenses)

10 x Seledor D40 Lustre+ LED (45° round lenses)

6 x Source 4 Series 2 Lustr+ 25/50 LED Profile

12 x Rama 175 LED Fresnel with Barn doors

Additional

1 x 24" Mirror ball with motor

1 x Unique 2.1 Hazer

1 x Rosco Smoke Machine

Various Booms and boom bases, boom arms, H-stands

Additional Equipment is shared between spaces and may not be available. Please confirm any requirements and additional costs with the Production Manager.

Io Myers has a reasonable stock of DMX and 240V Cables.

Sound

The standard set up for Io Myers is a L-R Front and Rear arrangement, with a speaker hung in each corner of the space. The mixing position is on the balcony, although it is possible to move the desk to the floor if required.

There is also a rehearsal sound rack at stage level, which includes a mixer and CD player. This can be patched into the Standard PA.

Desk

Allen & Heath SQ6 mixing desk

Standard PA

2 x Australian Monitor AM1200 (Quad) amplifier

1 x Tannoy TDX-1 Crossover/processor

4 x Tannoy V12 speakers (located in corners of the space)

2 x Martin CSX 118 passive subs powered by a Crown amp.

Music PA

2 x Martin CDD12 Speakers

2 x Martin CSX 118 subs

Monitors

4 x QLC K10 Speakers

2 x QLC K10.2 Speakers

2 x JBL EON 510

Stage boxes

2 x AB168 (16 in, 8 out)

Dx Hub

Microphones and DIs

1 x SM 58 (painted white)

4 x Beta SM58A

4 x Beta SM57A

1 x SM 57

1 x Audix drum mic kit (1 x D6, 1 x i5, 1 x D4, 2 x D2)

2 x Rode NT5 Microphones

2 x BSS AR 133 Active DI Boxes

1 x Behringer Ultra DI Box

2 x Radial JDI Stereo Passive DI Boxes

2 x Behringer Ultra DI DI20 Stereo DI Boxes

2 x Pro co AV-1A AV Interface

Variety of mic stands

Monitors and microphones are shared between the spaces. Please contact the Production Manager to confirm availability and any additional costs.

NB. Please note that Io Myers Studio is not suitable for close, critical audio recording as we have noise from air-conditioning units, noise from corridor hand driers, noise from neighbouring Studio One and often noise from the podium above us.

Yamaha Active Field Control

Io Myers is fitted with a Yamaha AFC3 system that electronically alters the acoustic properties (reverberation) of the room. There are settings for various seating layouts and uses. Each setting has a choice of a medium reverb (1.6 sec) and long reverb (1.9 sec).

As part of the system, there are eight microphones and 40 speakers installed around the theatre, including on the balcony rail. The system is precisely tuned for these, so these cannot be moved or adjusted under any circumstances.

The system is controlled from the balcony level on the western wall, where the bio box is located.

AV

Io Myers has a variety of different projectors, screens and AV equipment. A 4m wide (adjustable ratio) retractable screen is permanently rigged on the eastern (dressing room) side of the theatre.

All AV equipment is shared between spaces, so please confirm any requirements and additional costs with the Production Manager.

Seating Bank

Io Myers has two 56 seat Interseat mobile seating banks. They can be joined together to form one large seating bank. When not in use they are stored along the backstage dressing room wall.

It takes a minimum of 4 crew to move the seating banks. This must be done under the supervision of two approved technicians from Io Myers (as part of the 4).

Generally, it takes about 60 minutes to set up or strike the seating bank.

Rigging

All rigging in Io Myers Studio must be carried out by a licensed rigger. Limited rigging points are available in the grid.

For more information please contact the Production Manager.

Stage Floor

The stage floor is sprung polished brushwood.

It is not possible to screw or attach to the floor in any way.

Only PVC (Electrical) Tape should be used on the floor. Gaffa or mark-up tape is not to be used as it damages the floor.

Care should be taken to ensure that the floor is not scuffed, scratched or marked in anyway. Everything should be wheel or carried on the floor, not dragged. Users will have the cost of restoring any damage charged to them

Power

Power is distributed throughout the theatre

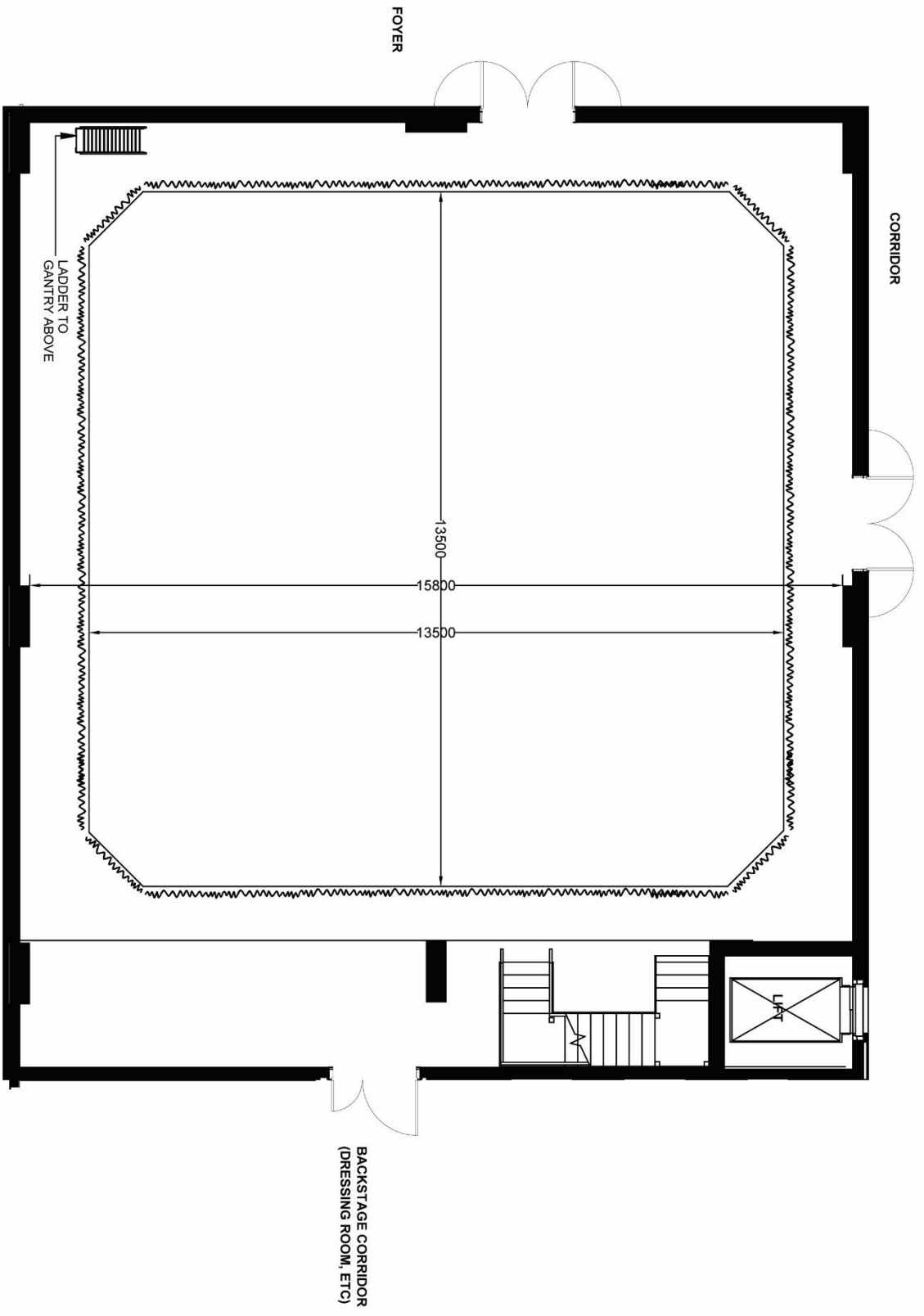
Technical Earth GPOs (Green) are located at stage, balcony and grid level
32 Amp 3 Phase connections are located at stage, balcony and grid level

Health and Safety

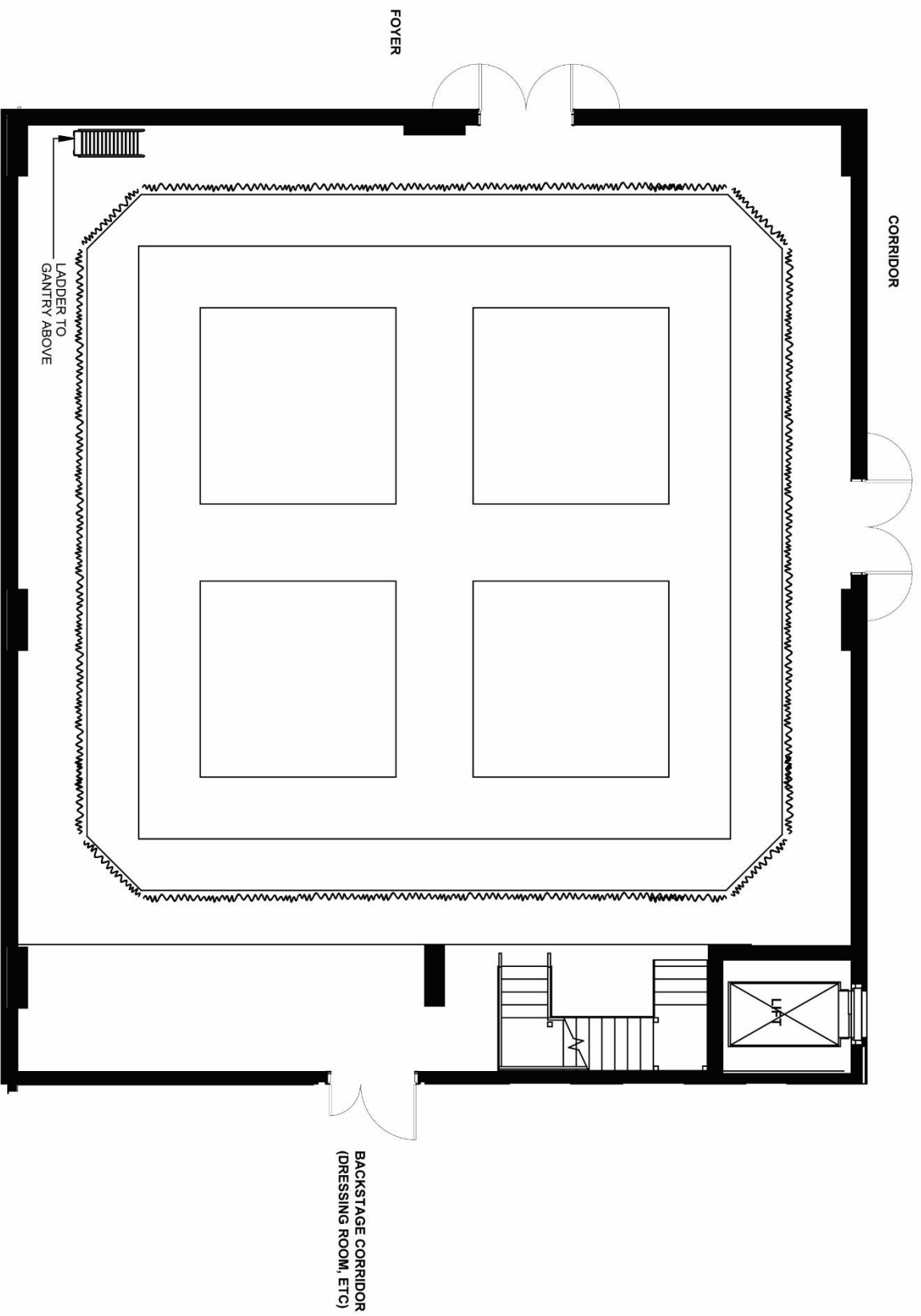
All performers and crew will be required to complete a safety induction before commencing work in the theatre. This can be completed online before arriving or by an authorised staff member in person.
Risk Assessments may need to be supplied. Safety Data Sheets (SDS) will need to be supplied for anything brought onsite.
Please confirm all safety requirements or concerns with the Production Manager.

Plans

A general plan of the theatre follows. A full set of plans is available at
<https://www.arts.unsw.edu.au/sam/creative-practice/esme-timberly-creative-practice-lab/venues-hire>



PLEASE NOTE: This plan is drawn from construction drawings and may not be correct. All dimensions must be verified onsite.
1:100 on A4



PLEASE NOTE: This plan is drawn from construction drawings and may not be correct. All dimensions must be verified onsite.
1:100 on A4